
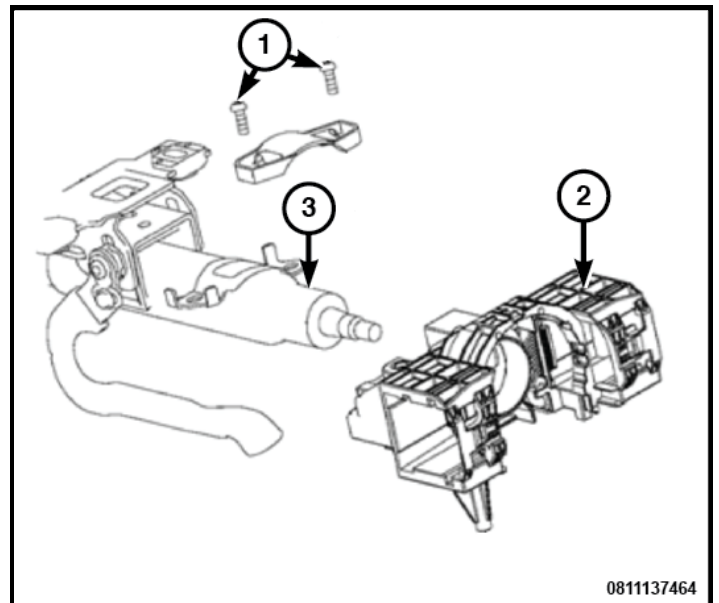


## REMOVAL AND INSTALLATION

 **Labor Operations:** Click to display a list of Labor Operations associated with this procedure

### REMOVAL

1. Disconnect and isolate the negative battery cable.
2. Remove the steering wheel. ([Refer to 19 - Steering/Column/WHEEL, Steering/Removal and Installation](#)) .
3. Remove the steering column upper and lower shrouds. ([Refer to 19 - Steering/Column/SHROUD, Steering Column/Removal and Installation](#)) .
4. Remove the exterior lights stalk switch. ([Refer to 08 - Electrical/Lamps/Lighting - Exterior/SWITCH, Multifunction, Left/Removal and Installation](#)).
5. Remove the windshield wiper stalk switch. ([Refer to 08 - Electrical/8R - Wipers/Washers/SWITCH, Multifunction, Right/Removal and Installation](#)) .
6. Remove the clockspring. ([Refer to 10 - Restraints/CLOCKSPRING/Removal and Installation](#)) .
7. Remove the two shear bolts (1) attaching the Steering Column Control Module (SCCM) (2) to the steering column (3).



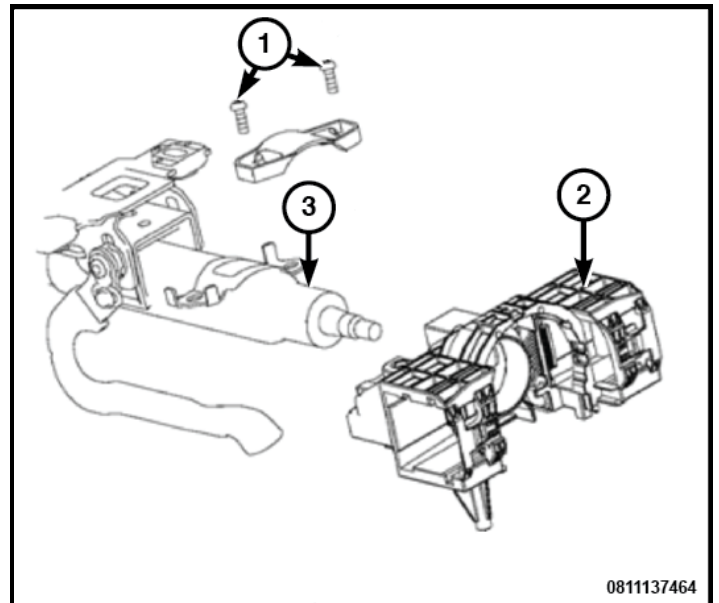
8. Disengage the wire harness connectors from the rear of the SCCM and remove the SCCM from the vehicle.

## INSTALLATION

1. Ensure that the SCCM is not damaged.
2. Connect the SCCM wire harness connectors at the rear of the SCCM.

3. Position the SCCM (2) onto the steering column (3).

4. Install new fasteners (1) and tighten securely.



5. Install the clockspring. (Refer to 10 - Restraints/CLOCKSPRING/Removal and Installation) .
6. Install the windshield wiper stalk switch. (Refer to 08 - Electrical/8R - Wipers/Washers/SWITCH, Multifunction, Right/Removal and Installation) .
7. Install the exterior lights stalk switch. (Refer to 08 - Electrical/Lamps/Lighting - Exterior/SWITCH, Multifunction, Left/Removal and Installation).
8. Install the steering column upper and lower shrouds. (Refer to 19 - Steering/Column/SHROUD, Steering Column, Lower/Removal and Installation) .
9. Install the steering wheel. (Refer to 19 - Steering/Column/WHEEL, Steering/Removal and Installation) .
10. Connect the negative battery cable.
11. Connect the diagnosis equipment and check that there are no errors in the system.